

**⚠ DANGER**



- (D) Nicht für sicherheitsrelevante Anwendungen geeignet
- (GB) Not suitable for safety relevant application

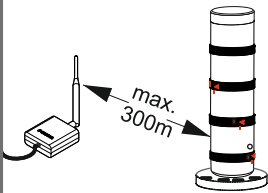
**NOTICE**



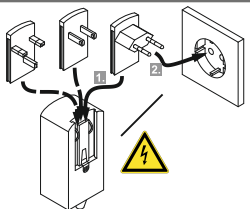
- (D) Systemanforderungen im Handbuch
- (GB) System requirements in the manual (www.werma.com/win)



- (D) Administrationsrechte erforderlich
- (GB) Administration rights are necessary



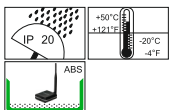
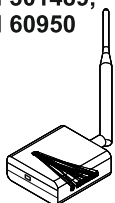
- (D) Max. 300m (Freifeld)  
ISM-Frequenz: 868,0...868,6 Mhz, 10mW
- (GB) Max. 300m (unobstructed line of sight)  
ISM-frequency: 868,0...868,6 MHz, 10mW



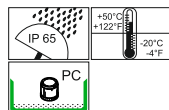
- (D) Permanente Spannungsversorgung
- (GB) Permanent operating voltage

Input: 100 - 240 V~, 50-60 Hz  
Output: 24 V =, I<sub>max</sub> 1 A

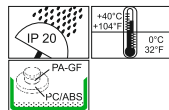
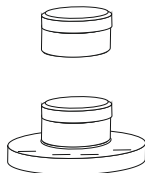
ETSI EN 300220,  
EN 301489,  
EN 60950



ETSI EN 300220,  
EN 301489,  
EN 60950



EN 60947-5-1



Support Hotline: +49(0)7424-9557-222

# Getting started

## AndonSPEED



931086001901\_AA  
310.860.019

Empfängerkategorie nach EN 300220: Kat. 3.  
Dieses Produkt hält die grundlegenden Anforderungen nach der Richtlinie 1999/5/EG ein.  
Die EU Konformitätserklärungen erhalten Sie unter den angegebenen Kontaktdaten.

Receiver category according to EN 300220: category 3.  
This product fulfills the requirements of the norm 1999/5/EU.  
The Declarations of Conformity is available on request.



WERMA Signaltechnik GmbH + Co. KG  
D-78604 Rietheim-Weilheim  
Telefon +49 (0)7424 / 9557-0  
Telefax +49 (0)7424 / 9557-44  
info@werma.com  
www.werma.com

**1.**

1. Optional: Test mit Standard-Anschlusselement  
2. Optional: Test with standard-terminal element

**2.**

**⚠ DANGER**  
Ⓛ Betrieb **ausschließlich** mit dem im Lieferumfang enthaltenen Netzteil zulässig.  
Ⓛ Operation **only** with power adapter included in assembly.

640 800 00

860 640 07

**3.**

WERMA  
Software/Manual Download:  
www.werma.com/win  
Software installation

**6.**

**5.**

How do you want to continue?  
 Finish configuration  
 Configure a WIN master  
 Configure a WIN slave

860 640 02

**4.**

Activation  
+  
Activate WIN device  
Configure WIN slave/WIN master

860 000 00

**7.**

1. 2.

Werma WIN

**8.**

● Power  
● Ready

**9.**

**Video**  
 📺 <https://www.youtube.com/user/WERMASignaltechnik>  
 📺 <https://www.youtube.com/user/WermaInformation>