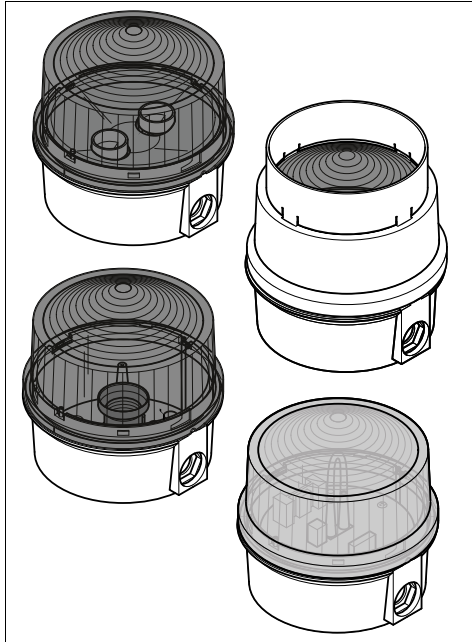
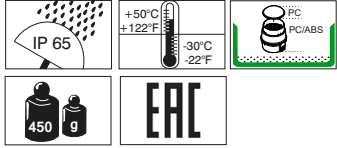


EN 60598: 890 X00 00, 890 X10 00,
895 X00 00, 895 X10 00,
897 X00 XX,



⚠ DANGER

Ⓓ Anschluss **ausschließlich** durch ausgebildete Elektro-Fachkräfte.

ⒼⒸ Electrical connection is to be made by trained electrical specialists **only**.

Ⓕ Le branchement doit **uniquement** être effectué par des professionnels.

Ⓘ Il collegamento deve essere eseguito **solo** da elettricisti specializzati.

Ⓔ La conexión **sólo** debe ser realizada por electricistas debidamente formados.

Ⓟ A ligação deve ser feita **exclusivamente** por profissional elétrico especializado.

ⓃⓁ De aansluiting mag **enkel** gebeuren door erkende vakmensen.

ⒸⓏ Připojení smí **provádět** pouze kvalifikovaný personál.

ⓅⓁ Podłączenie **wyłącznie** przez specjalistów-elektryków.

ⒻⒿ Liittäminen kuuluu **ainoastaan** koulutettujen sähköalan ammattilaisten tehtäviin.

ⓇⓊⓢ Подключение проводов только специа-листом-электриком.

ⒹⓇ Bağlantı **sadece** eğitimli elektrik teknisyenleri tarafından yapılmalıdır.

ⒸⓃ 布线需由专业电工执行

⚠ **IP 65**

i

890 x00 00	895 x00 00	12 V - 240 V ≈, ≤ 25 W (15 W), E27
890 x10 00	895 x10 00	12 V - 240 V ≈, ≤ 2 x 15W, E14
897 x00 55	897 x00 68	24 V ≈, ≤ 700 mA 230 V~, ≤ 200 mA

955 890 38 | E14, 230 V ≈, 15 W

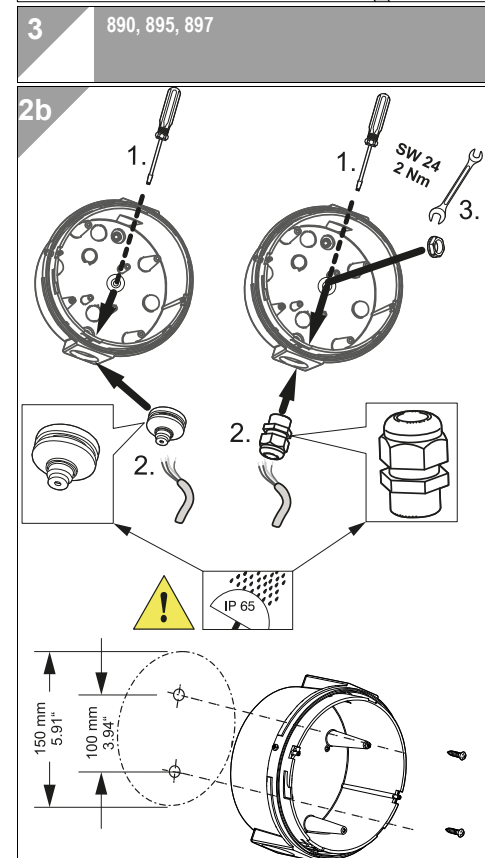
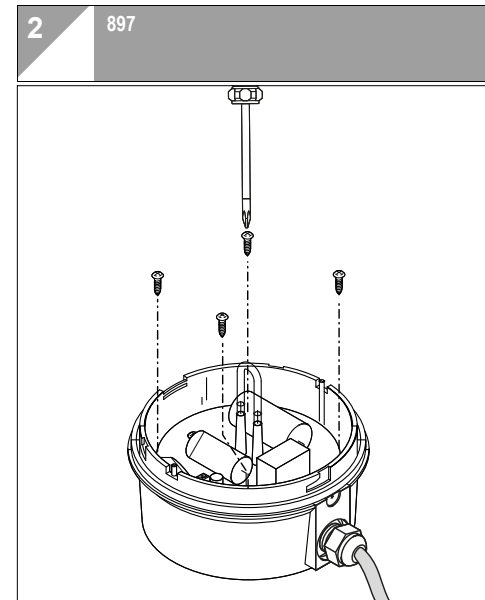
956 050 67 | LED-Bulb, E27, 230 V ≈
956 050 68 | LED-Bulb, E27, 115 V~
956 050 55 | LED-Bulb; E27, 24 V ≈

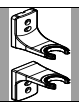
897 x00 55
 T 1,25 A / 250 V ~

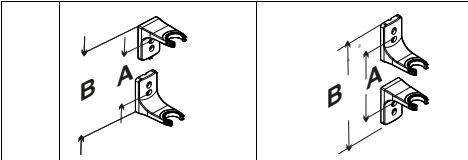
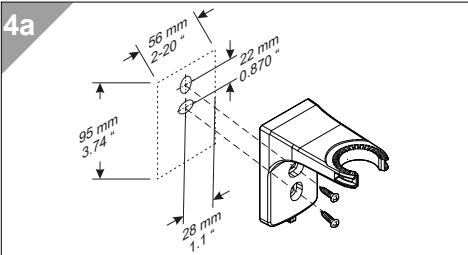
897 x00 68
 T 1,0 A / 250 V~





⚠ DANGER

1

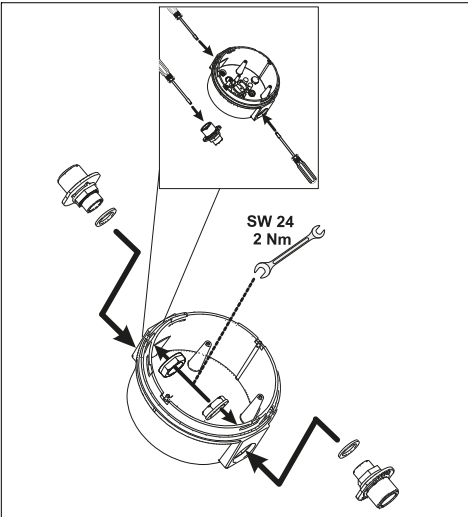


4 890 +  975 890 33
975 890 34
975 890 35
975 890 37

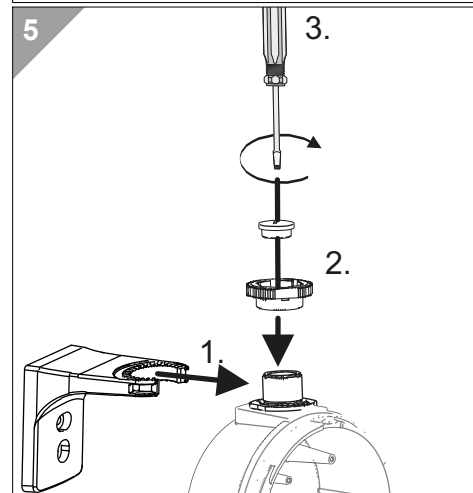
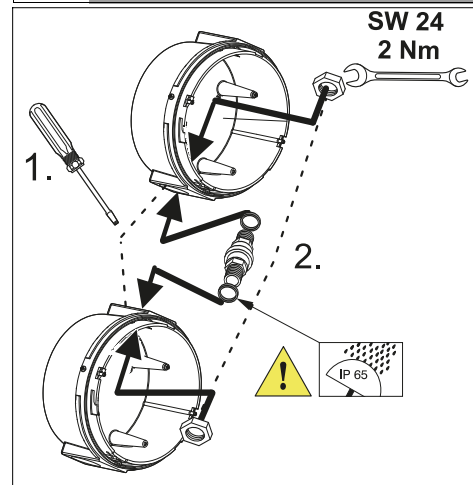


	A	B	A	B
	93 mm 3.66"	190 mm 7.48"	245 mm 9.65"	338 mm 13.31"
	251,2 mm 9.89"	348,2 mm 13.71 "	406,2 mm 15.87"	496,2 mm 19,54"
	409,4 mm 16.12"	506,4 mm 19.94 "	561,4 mm 22.10"	645,4 mm 25.76"
	567,6 mm 22.35 "	664,6 mm 26.17"	719,6 mm 28.33"	812,6 mm 31.99"

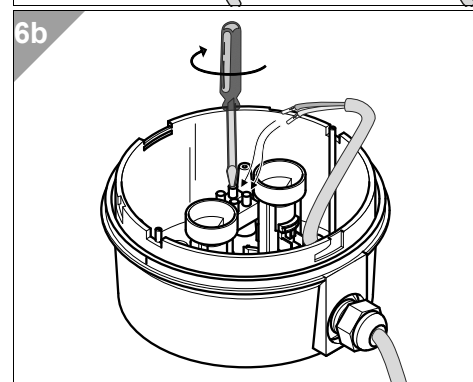
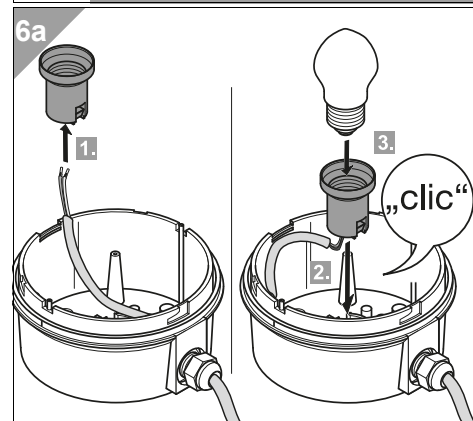
4b 



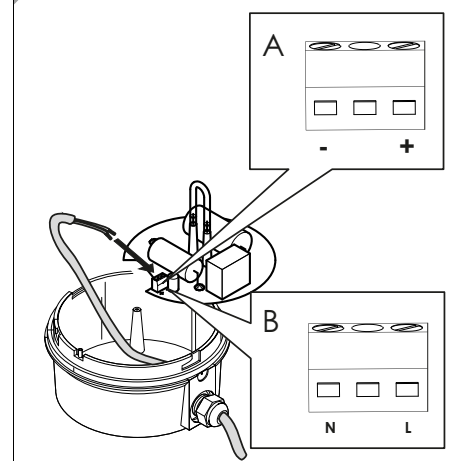
4c 



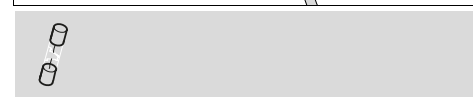
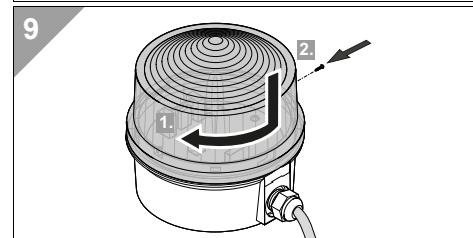
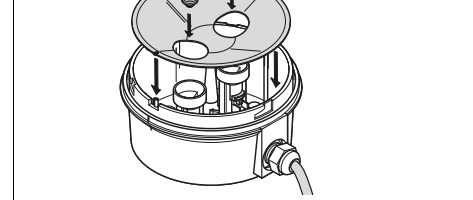
6 5a - 890 x00 00, 895 x00 00
5b - 890 x10 00, 895 x10 00
5c- 897



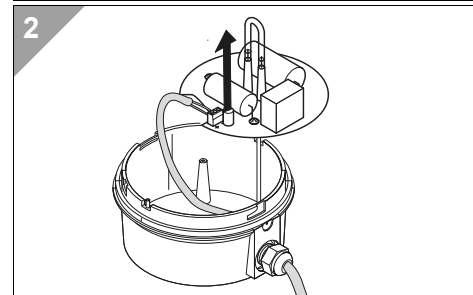
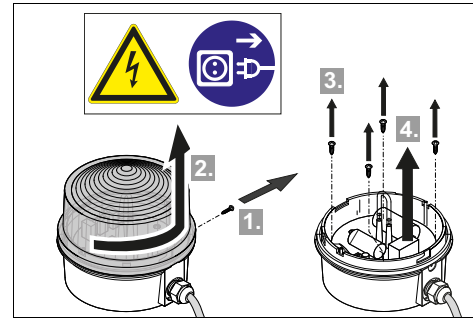
7c A: (DC) 897 x00 55
B: (AC) 897 x00 68



8 890 x10 00, 895



1 897



931089000101_AH
310.890.001